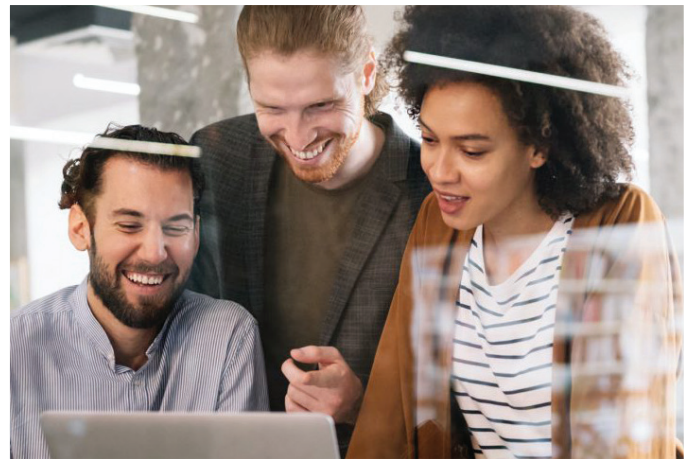


Evaluate Engagement

Information Sheet



Can you evaluate your engagement process with confidence?

Do you follow an effective engagement evaluation framework?

The Evaluate Engagement course will help engagement practitioners develop critical thinking about what works most effectively and what doesn't, so that they can evaluate and report on their engagement process with confidence.

To enrol in this course, you must have completed Essentials of Engagement training as the pre-requisite course to others in the curriculum.

**Earn 6
CPD points
for this
course.**

Course Aim

To evaluate both the engagement process and the engagement outcomes for an engagement project or program.



Course Objectives

- Use an evaluation template to plan an evaluation for your own engagement projects or programs
- Be able to prepare a report to present at a senior level and/or to the decision-makers, and a report to the community and stakeholders involved/affected by the project or program.



Learning Outcomes

- Develop the knowledge and tools to implement and interpret an effective engagement evaluation framework.



Course Content

- Evaluation models and evaluation challenges
- Complete an Evaluation Plan template
- Interpreting the Evaluation Framework
- What does evaluation mean for practitioners and our audiences?

Participants will have the opportunity to reflect on their own role and experiences in engagement, whilst recognising opportunities for their future training needs.

Benefits

- This Evaluate Engagement course will help to assist you define the purpose of your evaluation, scope your evaluation and develop an effective evaluation framework to deliver an evaluation plan for your engagement projects or programs
- Access to and can ask questions from IAP2A's experienced trainers, who are also highly experienced engagement practitioners
- Aan opportunity to explore your engagement learning journey, build on your own professional development and provides you the opportunity to develop and/ or enhance your own professional network.

Who Should do this Training?

- This course is suitable for engagement practitioners with two or more years' experience in engagement
- If you wish to obtain a professional qualification by completing the IAP2 Australasia Certificate in Engagement.

